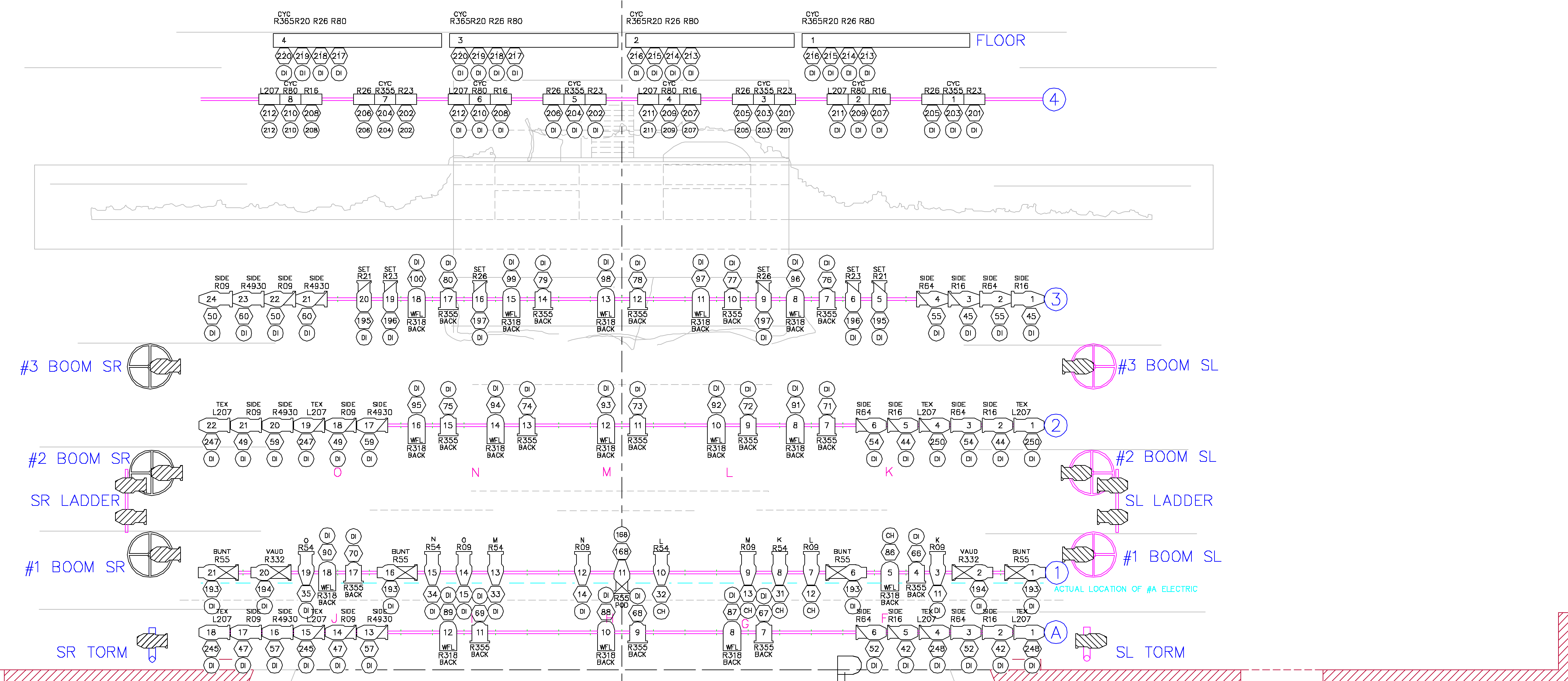


LOCATION	TRIM
33	CYCLORAMA
32	BLACK LEGS
31	BLACK BORDER
30	#4 ELECTRIC
29	BLACK BORDER
28	BLACK LEGS
27	BLACK BORDER
26	BLACK LEGS
25	BLACK BORDER
24	BLACK LEGS
23	BLACK BORDER
22	BLACK LEGS
21	PROJECTION SCREEN
20	#3 ELECTRIC
19	BLACK LEGS
18	BLACK BORDER
17	BLACK BORDER
16	VAUDEVILLE CURTAIN
14	BLACK LEGS
13	#2 ELECTRIC
12	BLACK LEGS
11	BLACK BORDER
10	CHANDELIER
9	BUNTING
8	BLACK LEGS
7	BORDER
6	#1 ELECTRIC
5	#A ELECTRIC
4	SCRIM
3	BLACK LEGS
2	HARD TEASER
1	HOUSE CURTAIN



### LEGEND

- COLORTRAN 20° - 1kw
- COLORTRAN 30° - 750w
- COLORTRAN 40° - 750w
- ETC SOURCE 4 19' - 575w
- ETC SOURCE 4 26' - 575w
- ETC SOURCE 4 36' - 575w
- 6x16 CENTURY - 1kw
- 6x12 CENTURY - 750w
- 6x9 CENTURY - 750w
- 6x12 ALTMAN - 750w
- 6x16 ALTMAN - 750w
- 6x9 ALTMAN - 750w
- 6" FRESNEL - 750w
- 8" FRESNEL - 1KW
- 12" FRESNEL - 2KW
- PAR 64 WFL - 1KW
- CYC LIGHT - 1KW/circuit
- 8'x8' STRIPLIGHT - 1.2kw/cir
- WYBRON FORERUNNER COLOR SCROLLER
- GAM SCENE MACHINE

### KEY

	FOCUS COLOR CHANNEL		FOCUS COLOR LAMP TYPE CHANNEL
	FIXTURE # CHANNEL		FIXTURE # CHANNEL

- ### NOTES
- PLEASE SAFETY CABLE, AND OPEN ALL SHUTTERS WHILE HANGING
  - STANDARD SPACING IS 1'-6", TICK MARKS INDICATE STANDARD SPACING. OTHER SPACING IS NOTED
  - R=ROSCO COLOR MEDIA, L=LEE COLOR MEDIA, G=GREAT AMERICAN MARKET COLOR MEDIA
  - ALL MATERIALS AND CONSTRUCTION MUST COMPLY WITH THE MOST STRINGENT APPLICABLE NATIONAL AND LOCAL FIRE AND SAFETY CODES. ALL DRAWINGS AND PAPERWORK REPRESENT VISUAL CONCEPTS AND CONSTRUCTION SUGGESTIONS ONLY. THE DESIGNER IS UNQUALIFIED TO DETERMINE THE STRUCTURAL APPROPRIATENESS OF THIS DESIGN AND WILL NOT BE RESPONSIBLE FOR IMPROPER ENGINEERING, CONSTRUCTION, HANDLING OR USE OF THE LIGHTING AND/OR RIGGING EQUIPMENT.

THE OHIO STATE UNIVERSITY  
THURBER THEATRE  
**THE FIRE STILL BURNS**  
ONSTAGE

DIRECTED BY: JOHN GIFFIN  
LIGHTING DESIGN BY: KRISTOPHER JONES  
ASST. LIGHTING DESIGNER: JOE NEIKIRK  
SCENIC DESIGN BY: CARLA CHAFFIN  
SOUND DESIGN BY: DAVE ATKINSON  
COSTUME DESIGN BY: JOCELYN JURLINA  
PRODUCTION ELECTRICIAN: JOHN KIRKMAN

SCALE: 3/8"=1'-0"  
DATE: APRIL 26, 2003  
DRAWN BY: KDJ

DRAWING  
2  
OF 3

**kdj designs**  
Lighting Designs by Kristopher D. Jones  
www.kristopherdijones.com  
847-245-4599